



G.A. ROBINSON
LAND COMPANY - EST. 1950

Crowley's Ridge Hunting Preserve
St. Francis County, Arkansas

200.6+/- Acres



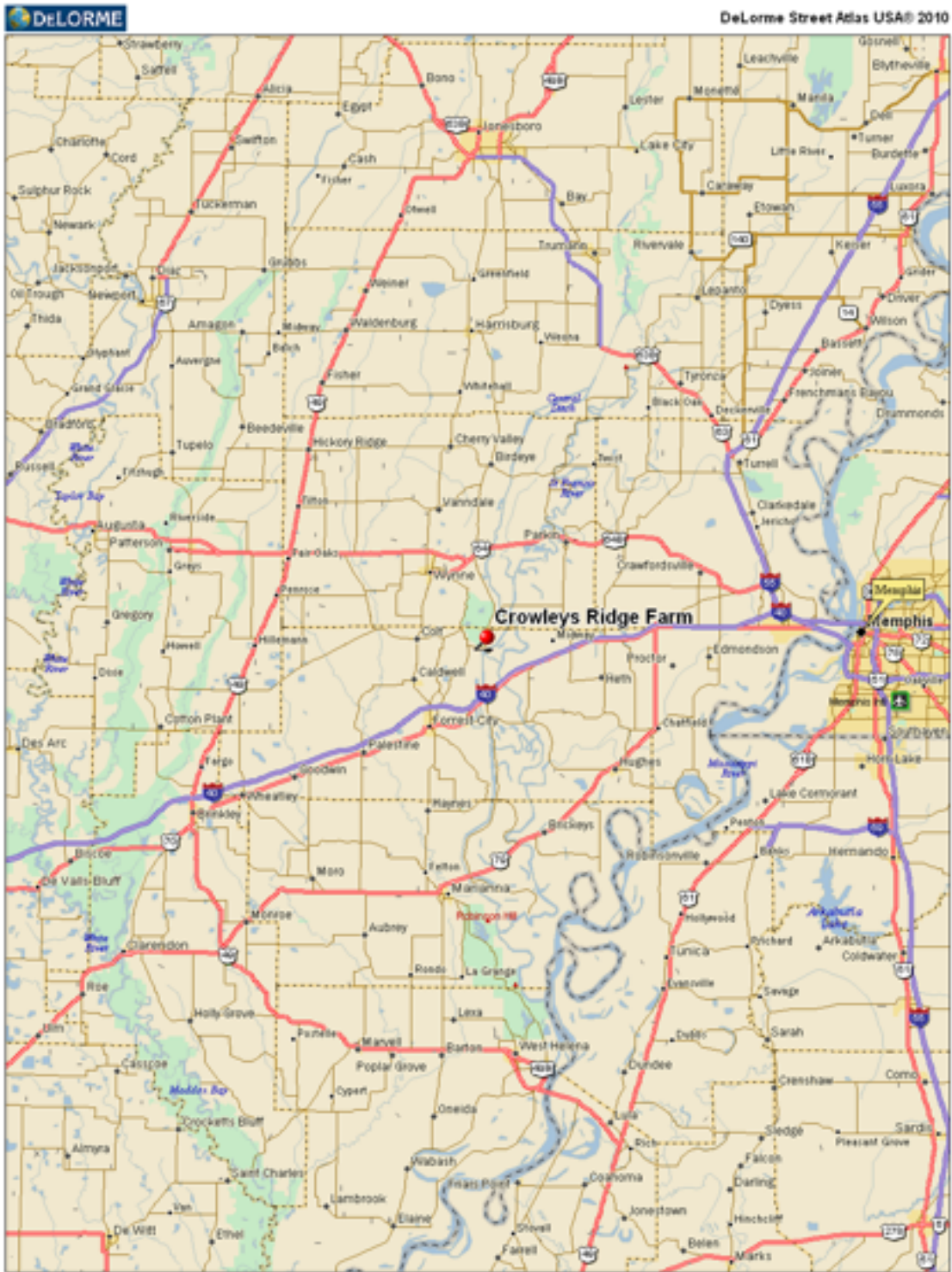
OFFERED BY:
G A Robinson Land Co. LLC
91 S Front St Suite 02
Memphis, Tennessee 38103
901-526-7631
www.garobinson.com

Crowley's Ridge Hunting Preserve

- Description:** This unique property is an excellent recreational tract that offers big game hunting for deer and turkeys, small game and waterfowl opportunities, and incredible fishing on two stocked lakes. With a perfect mix of open areas, woods and an extensive trail system, this is the ideal weekend getaway.
- Location:** The farm is located six miles north of the Interstate-40 in St. Francis County, Arkansas on Crowley's Ridge. Driving time is less than an hour from Memphis, Tennessee.
- Acreage:** There are 200.6+/- total acres with perfect balance of mature oak timber and wildlife openings.
- Topography:** The topography is gently rolling on top of Crowleys Ridge and this property overlooks the St Francis River bottoms from several hundred feet above offering great views.
- Improvements:** There are two well maintained metal shop buildings perfect for storing ATVs and hunting gear. There is also lodge overlooking one of the lakes, some repairs would be needed.
- Sales Price:** \$395,000 or \$1969 per acre
- Minerals:** All minerals owned by Seller (if any).
- Possession:** At closing.
- Showing:** By appointment only.

Bert Robinson IV
G A Robinson Land Co. LLC
91 South Front St, Suite 02
Memphis, Tennessee 38103
901-526-7631
bertrobinson@garobinson.com
www.garobinson.com

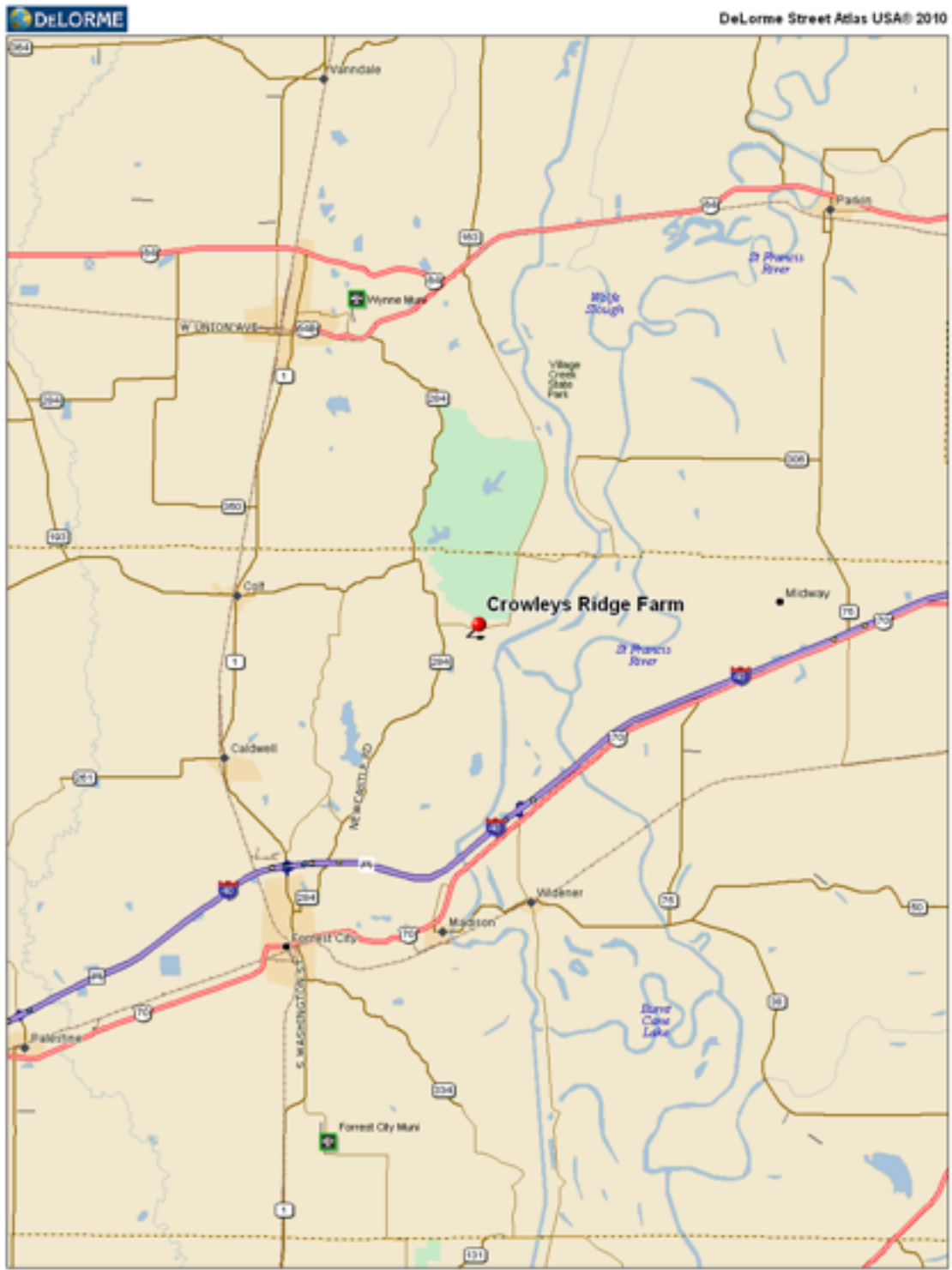
Location Map



Data use subject to license.
© DeLorme, DeLorme Street Atlas USA® 2010.
www.delorme.com



Area Map

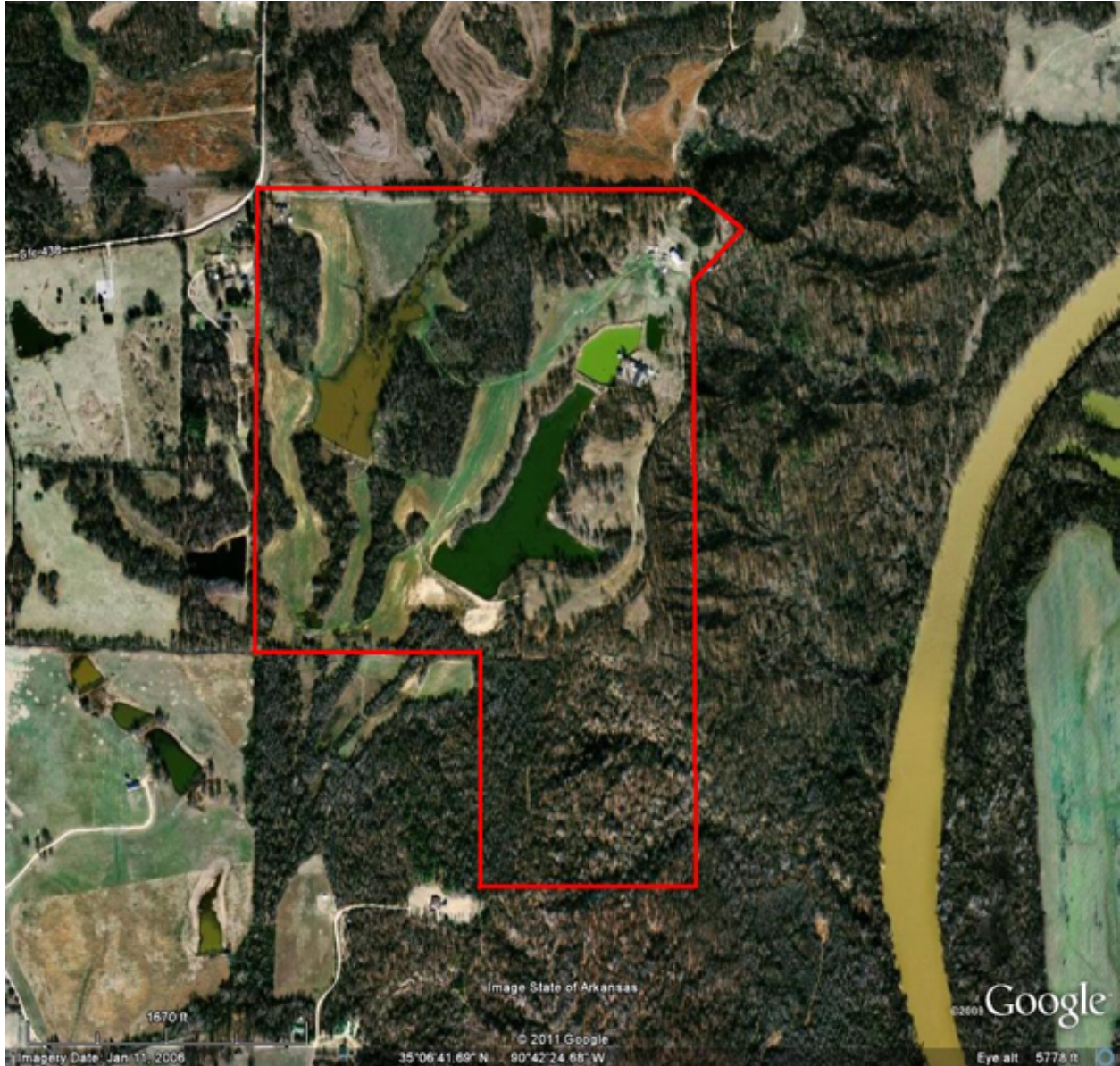


Data use subject to license.
© DeLorme. DeLorme Street Atlas USA® 2010.
www.delorme.com



Data Zoom 10-0

Aerial Photo



Property Photos













G.A. ROBINSON
LAND COMPANY - EST. 1950

To arrange a private showing please contact:

Bert Robinson IV

901-526-7631

bertrobinson@garobinson.com

www.garobinson.com

G. A. Robinson Land Co LLC is the exclusive listing agent for the Seller. All of the information contained herein is deemed to be accurate, however Agent and Seller do not warrant against errors or omissions and urge prospective Buyers to perform their own inspections and due diligence of the property.