



FOR SALE

Feathers Chapel Drive

Fayette County Investment / Recreational Property

224 Acres
Hickory Withe, Tennessee

G A Robinson Land Co. LLC is the Exclusive Agent for the property described herein. This brochure and all information contained herein is believed to be correct; however, we make no guarantee as to its accuracy. Prospective buyers are urged to inspect the property and perform their own independent due diligence. G A Robinson Land Co LLC and its agents assume no liability as to errors, omissions or investment results.

FOR APPOINTMENT PLEASE CONTACT: BERT ROBINSON IV

Bert Robinson IV | bertrobinson@garobinson.com

901.526.7631 | www.garobinson.com

91 South Front Street • Suite 02 • Memphis, Tennessee 38103





Feathers Chapel Drive

Hickory Withe, Tennessee

Description

Two hundred and twenty-four acres of investment grade recreational property. Perfect for a house farm or country estate. There is an excellent mix of open crop land and mature timber. The last ten years the property has been managed for wildlife. Large deer have been regularly harvested and the turkey population is growing. Invest now in the path of growth!

Location

Located in the Hickory Withe area of West Fayette County. The property is only two miles as the crow flies from the intersection of state hwy 196 and Interstate 40. Plans for a cloverleaf interchange have been recently announced by the Tennessee Department of Transportation at this intersection.

Acreage

224 acres of investment grade recreational property.

Property Taxes

\$625 / year

Farming Income

\$9,750 / year cash rent

Sales Price

\$3375 per surveyed acre

Showing

By appointment only.

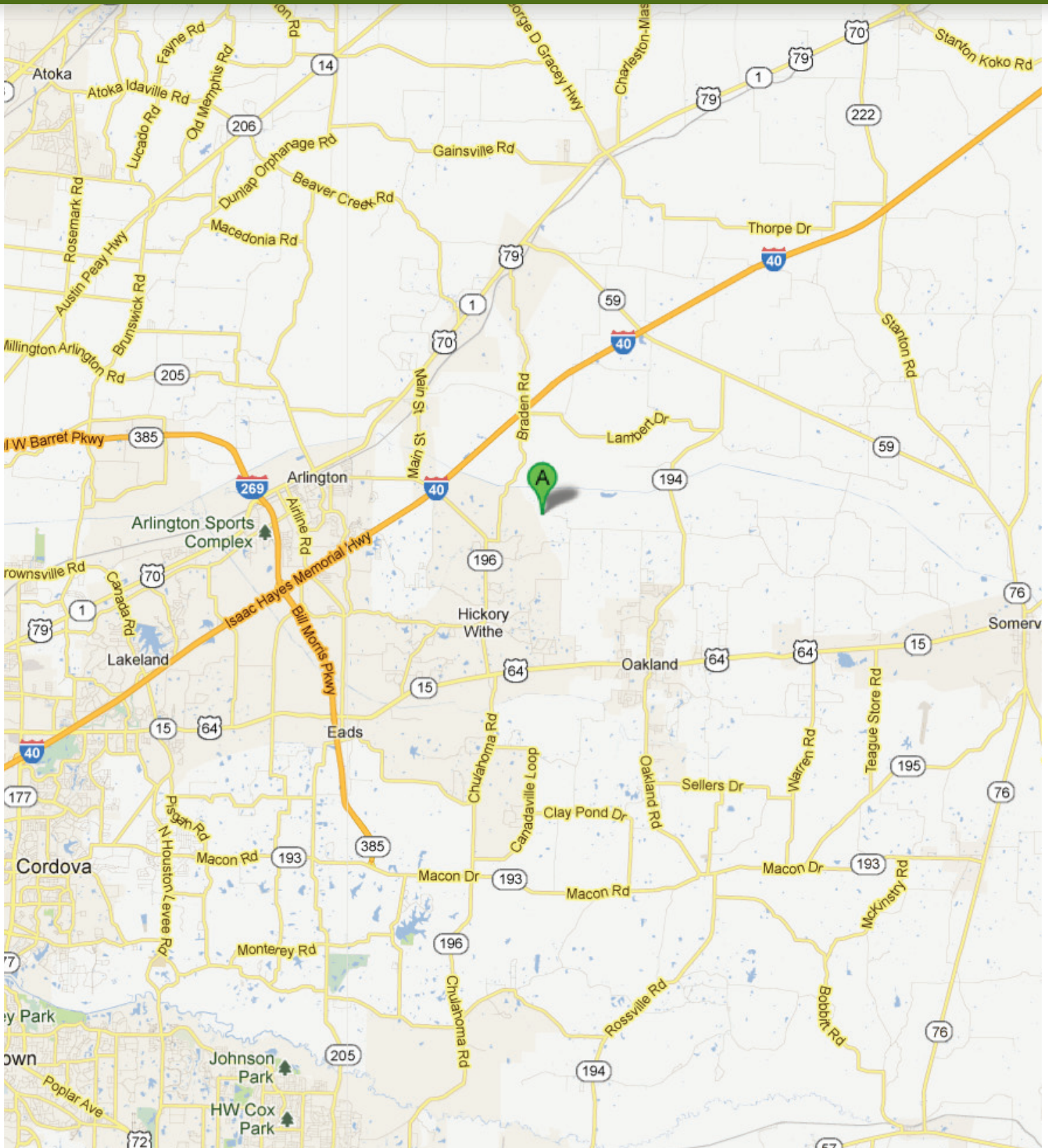
Bert Robinson IV | bertrobinson@garobinson.com

901.526.7631 | www.garobinson.com

91 South Front Street • Suite 02 • Memphis, Tennessee 38103



AERIAL PROPERTY MAP

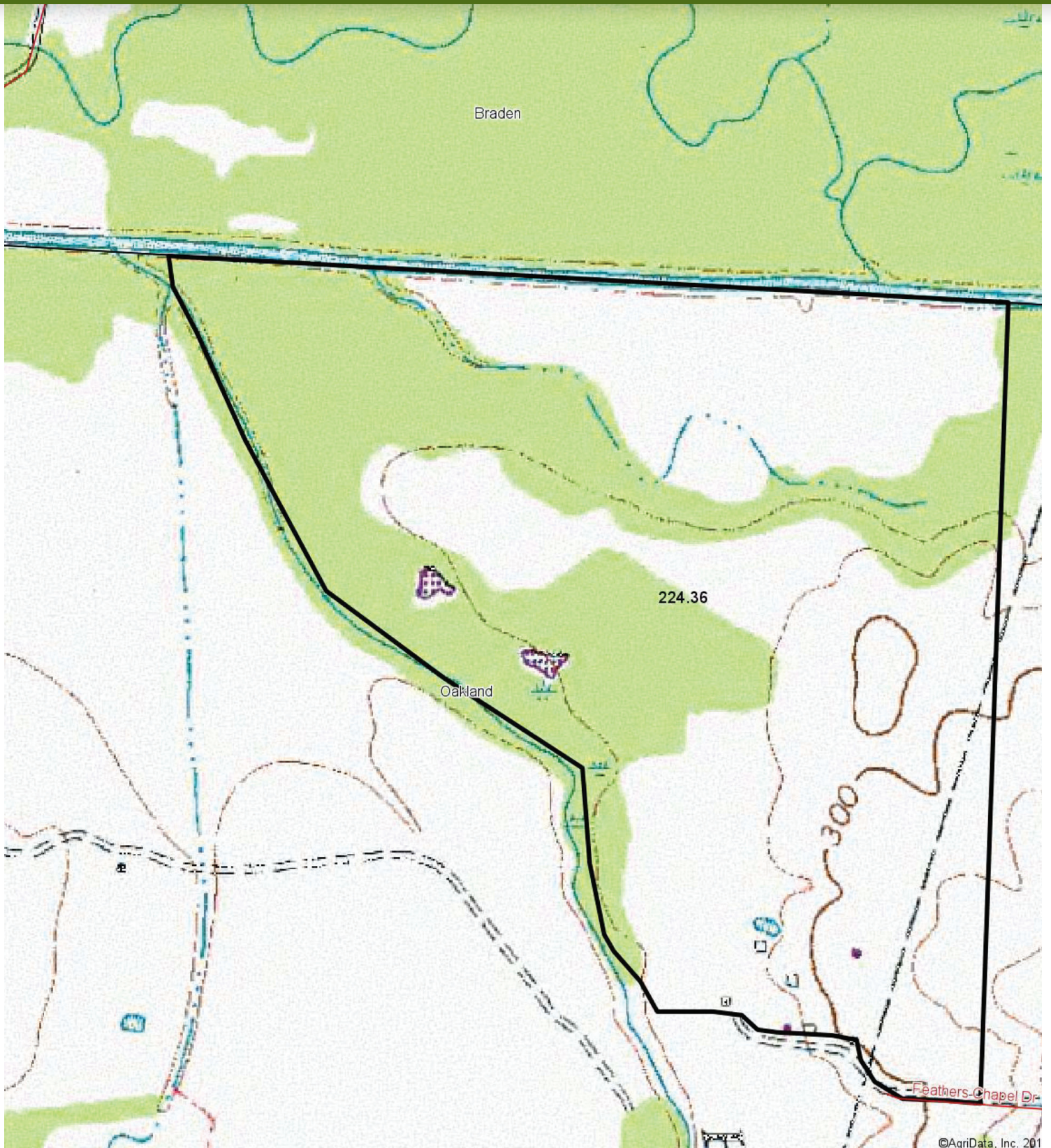


Bert Robinson IV | bertrobinson@garobinson.com

901.526.7631 | www.garobinson.com

91 South Front Street • Suite 02 • Memphis, Tennessee 38103





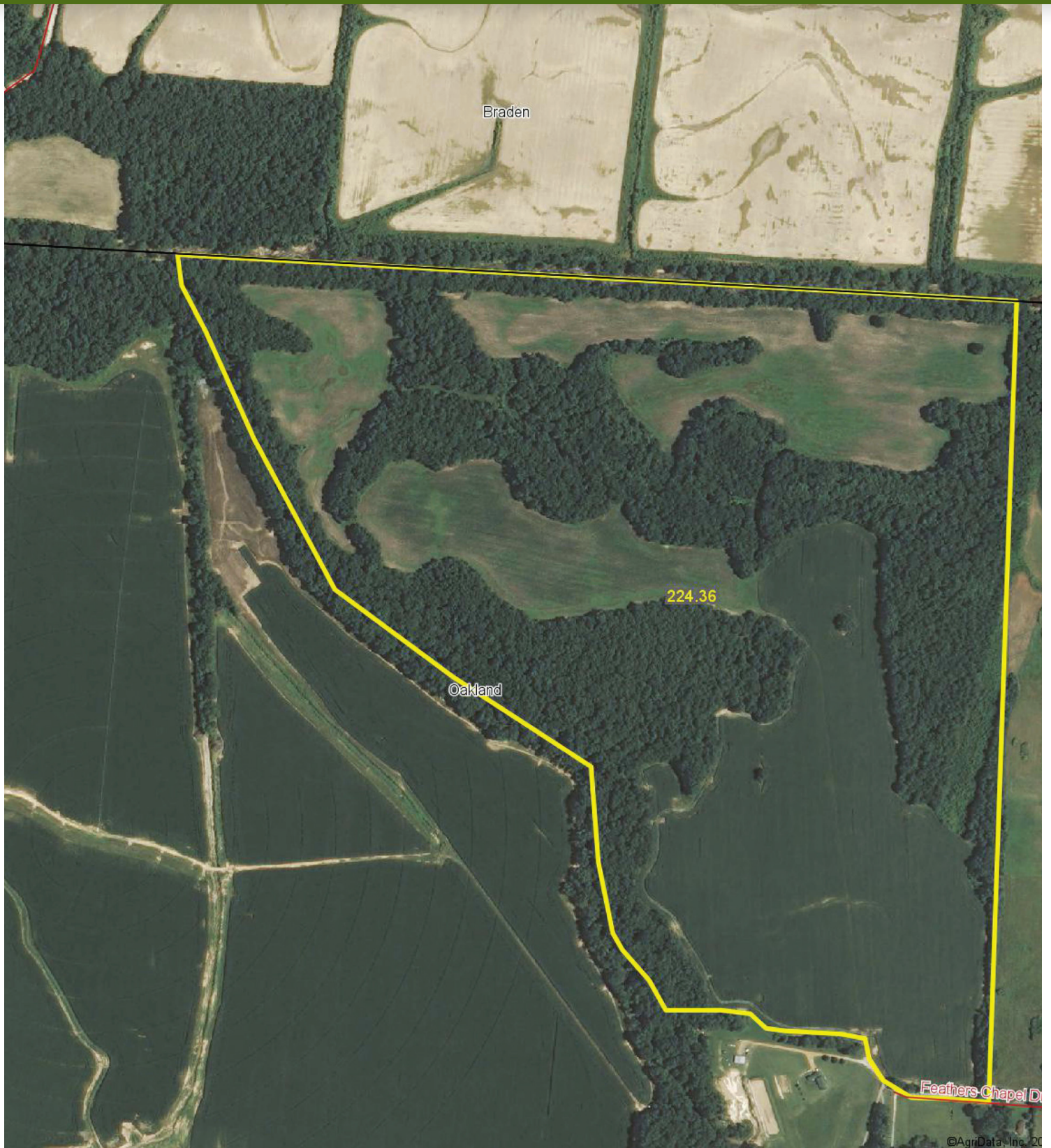
Bert Robinson IV | bertrobinson@garobinson.com

901.526.7631 | www.garobinson.com

91 South Front Street • Suite 02 • Memphis, Tennessee 38103



G.A. ROBINSON
LAND COMPANY - EST. 1950



©AgriData, Inc. 20

Bert Robinson IV | bertrobinson@garobinson.com

901.526.7631 | www.garobinson.com

91 South Front Street • Suite 02 • Memphis, Tennessee 38103

