

**Common Land Unit** Tract Boundary

- Non-Cropland; Cropland
- CRP

**Wetland Determination Identifiers**

- Restricted Use
- Limited Restrictions
- Exempt from Conservation Compliance Provisions

2018 NAIP Imagery

2021 Program Year

Map Created January 06, 2021

Farm **5271**

Tract **9278**

Tract Cropland Total: 20.45 acres

United States Department of Agriculture (USDA) Farm Service Agency (FSA) maps are for FSA Program administration only. This map does not represent a legal survey or reflect actual ownership; rather it depicts the information provided directly from the producer and/or National Agricultural Imagery Program (NAIP) imagery. The producer accepts the data 'as is' and assumes all risks associated with its use. USDA-FSA assumes no responsibility for actual or consequential damage incurred as a result of any user's reliance on this data outside FSA Programs. Wetland identifiers do not represent the size, shape, or specific determination of the area. Refer to your original determination (CPA-026 and attached maps) for exact boundaries and determinations or contact USDA Natural Resources Conservation Service (NRCS).

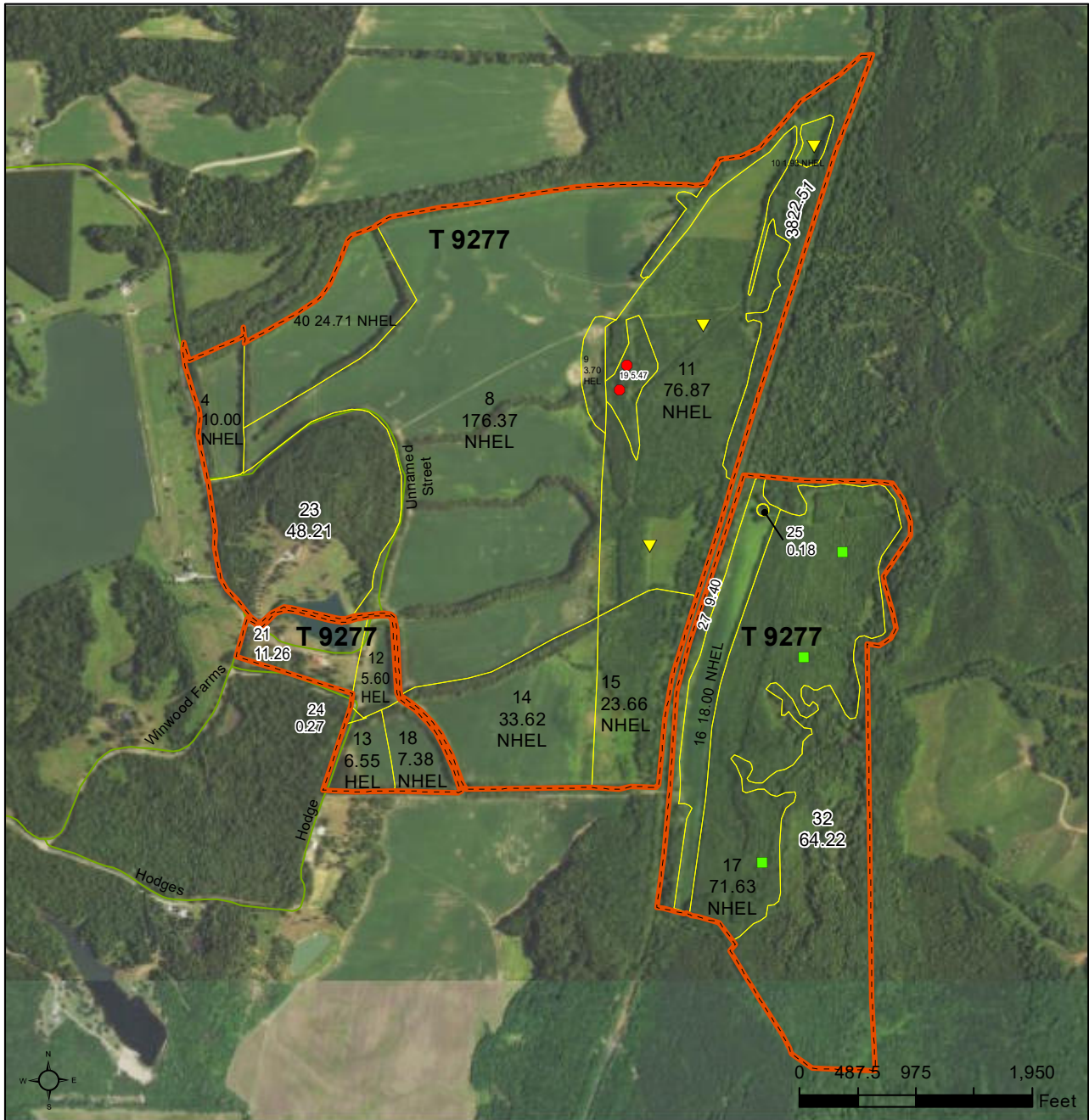
**Bert Robinson IV** | [bertrobinson@garobinson.com](mailto:bertrobinson@garobinson.com)

**901.526.7631** | [www.garobinson.com](http://www.garobinson.com)

91 South Front Street • Suite 02 • Memphis, Tennessee 38103



**G.A. ROBINSON**  
LAND COMPANY - EST. 1950



**Common Land Unit**   Tract Boundary  
  Non-Cropland; Cropland  
  street\_dm\_tn069

2018 NAIP Imagery

2021 Program Year  
 Map Created January 06, 2021

**Wetland Determination Identifiers**

- Restricted Use
- ▼ Limited Restrictions
- Exempt from Conservation
- Compliance Provisions

Tract Cropland Total: 460.02 acres

**Farm 5272**  
**Tract 9277**

United States Department of Agriculture (USDA) Farm Service Agency (FSA) maps are for FSA Program administration only. This map does not represent a legal survey or reflect actual ownership; rather it depicts the information provided directly from the producer and/or National Agricultural Imagery Program (NAIP) imagery. The producer accepts the data 'as is' and assumes all risks associated with its use. USDA-FSA assumes no responsibility for actual or consequential damage incurred as a result of any user's reliance on this data outside FSA Programs. Wetland identifiers do not represent the size, shape, or specific determination of the area. Refer to your original determination (CPA-026 and attached maps) for exact boundaries and determinations or contact USDA Natural Resources Conservation Service (NRCS).

**Bert Robinson IV** | [bertrobinson@garobinson.com](mailto:bertrobinson@garobinson.com)

**901.526.7631** | [www.garobinson.com](http://www.garobinson.com)

91 South Front Street • Suite 02 • Memphis, Tennessee 38103



Tennessee  
 Hardeman  
 Report ID: FSA-156EZ

U.S. Department of Agriculture  
 Farm Service Agency  
**Abbreviated 156 Farm Record**

Prepared: 10/12/21 12:40 PM  
 Crop Year: 2022  
 Page: 1 of 2

DISCLAIMER: This is data extracted from the web farm database. Because of potential messaging failures in MIDAS, this data is not guaranteed to be an accurate and complete representation of data contained in the MIDAS system, which is the system of record for Farm Records.

Operator Name: RHODES, BOYD L  
 Farm Identifier: [Blank]  
 Recon Number: 2017 - 54

Farms Associated with Operator:  
 None

ARC/PLC G/I/F Eligibility: Eligible

CRP Contract Number(s): 11035A

Farmland	Cropland	DCP Cropland	WBP	WRP	EWP	CRP Cropland	GRP	Farm Status	Number of Tracts
28.39	20.41	20.41	0.0	0.0	0.0	20.41	0.0	Active	1
State Conservation	Other Conservation	Effective DCP Cropland	Double Cropped	MPL/FPW					
0.0	0.0	0.0	0.0	0.0					

ARC/PLC					
PLC	ARC-CO	ARC-IC	PLC-Default	ARC-CO-Default	ARC-IC-Default
WHEAT, CORN	SOYBN	NONE	NONE	NONE	NONE

Tract Number: 9278      Description

FSA Physical Location : Hardeman, TN      ANSI Physical Location: Hardeman, TN

BIA Range Unit Number:

HEL Status: HEL Determinations not complete

Wetland Status: Tract contains a wetland or farmed wetland

WL Violations: None

Recon Number  
 2017 - 53

Farmland	Cropland	DCP Cropland	WBP	WRP	EWP	CRP Cropland	GRP
28.39	20.41	20.41	0.0	0.0	0.0	20.41	0.0
State Conservation	Other Conservation	Effective DCP Cropland	Double Cropped	MPL/FPW			
0.0	0.0	0.0	0.0	0.0			

Owners: RHODES, BOYD L

Other Producers: None

**Bert Robinson IV** | bertrobinson@garobinson.com

**901.526.7631** | www.garobinson.com

91 South Front Street • Suite 02 • Memphis, Tennessee 38103



Tennessee

U.S. Department of Agriculture

Prepared: 10/12/21 12:40 PM

Hardeman

Farm Service Agency

Crop Year: 2022

Report ID: FSA-156EZ

Abbreviated 156 Farm Record

Page: 1 of 2

DISCLAIMER: This is data extracted from the web farm database. Because of potential messaging failures in MIDAS, this data is not guaranteed to be an accurate and complete representation of data contained in the MIDAS system, which is the system of record for Farm Records.

Operator Name: GARY AND MACK MITCHELL  
 Farm Identifier:  
 Recon Number: 2017 - 54

Farms Associated with Operator:  
 3812, 4268, 5518

ARC/PLC G//F Eligibility: Eligible

CRP Contract Number(s): None

Farmland	Cropland	DCP Cropland	WBP	WRP	EWP	CRP Cropland	GRP	Farm Status	Number of Tracts
621.54	460.02	460.02	0.0	174.0	0.0	0.0	0.0	Active	1
State Conservation	Other Conservation	Effective DCP Cropland	Double Cropped	MPL/FWP					
0.0	0.0	286.02	6.0	0.0					

ARC/PLC						
PLC	ARC-CO	ARC-IC	PLC-Default	ARC-CO-Default	ARC-IC-Default	
WHEAT, CORN, SORGH	SOYBN	NONE	NONE	NONE	NONE	NONE

Crop	Base Acreage	PLC Yield	CCC-505 CRP Reduction	HIP
WHEAT	66.97	58	0.00	
CORN	74.13	58	0.00	
GRAIN SORGHUM	21.49	49	0.00	
SOYBEANS	82.55	16	0.00	0
<b>Total Base Acres:</b>	<b>245.14</b>			

Tract Number: 9277 Description

FSA Physical Location : Hardeman, TN

ANSI Physical Location: Hardeman, TN

BIA Range Unit Number:

HEL Status: HEL: conservation system is being actively applied

Recon Number

Wetland Status: Tract contains a wetland or farmed wetland

2017 - 53

WL Violations: None

Farmland	Cropland	DCP Cropland	WBP	WRP	EWP	CRP Cropland	GRP
621.54	460.02	460.02	0.0	174.0	0.0	0.0	0.0
State Conservation	Other Conservation	Effective DCP Cropland	Double Cropped	MPL/FWP			
0.0	0.0	286.02	6.0	0.0			

Crop	Base Acreage	PLC Yield	CCC-505 CRP Reduction
WHEAT	66.97	58	0.00
CORN	74.13	58	0.00

**Bert Robinson IV** | bertrobinson@garobinson.com

**901.526.7631** | www.garobinson.com



**G.A. ROBINSON**  
 LAND COMPANY - EST. 1950

91 South Front Street • Suite 02 • Memphis, Tennessee 38103