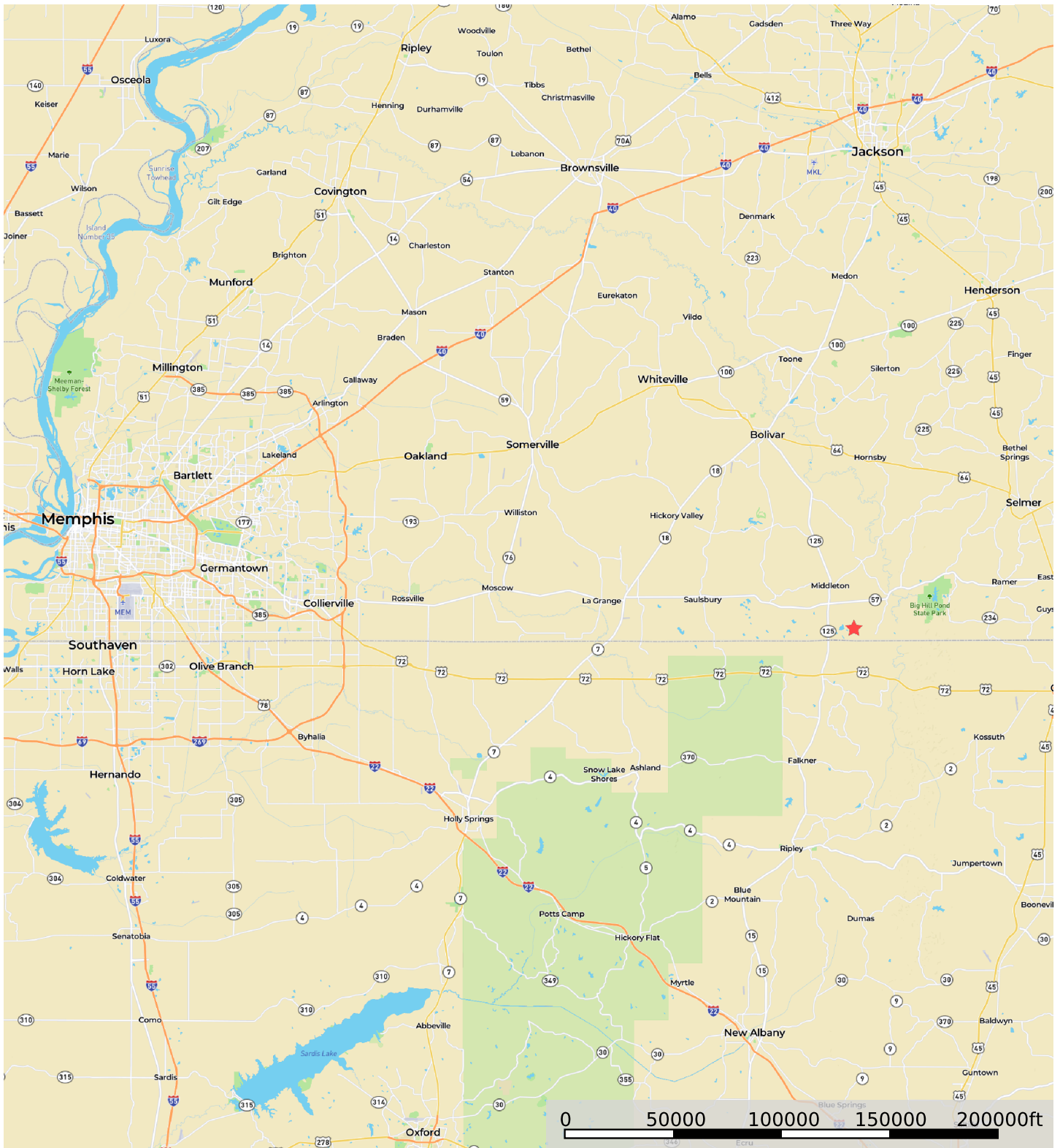


LOCATION MAP



Bert Robinson IV | bertrobinson@garobinson.com

901.526.7631 | www.garobinson.com

91 South Front Street • Suite 02 • Memphis, Tennessee 38103



Muddy Creek

Tennessee, AC +/-

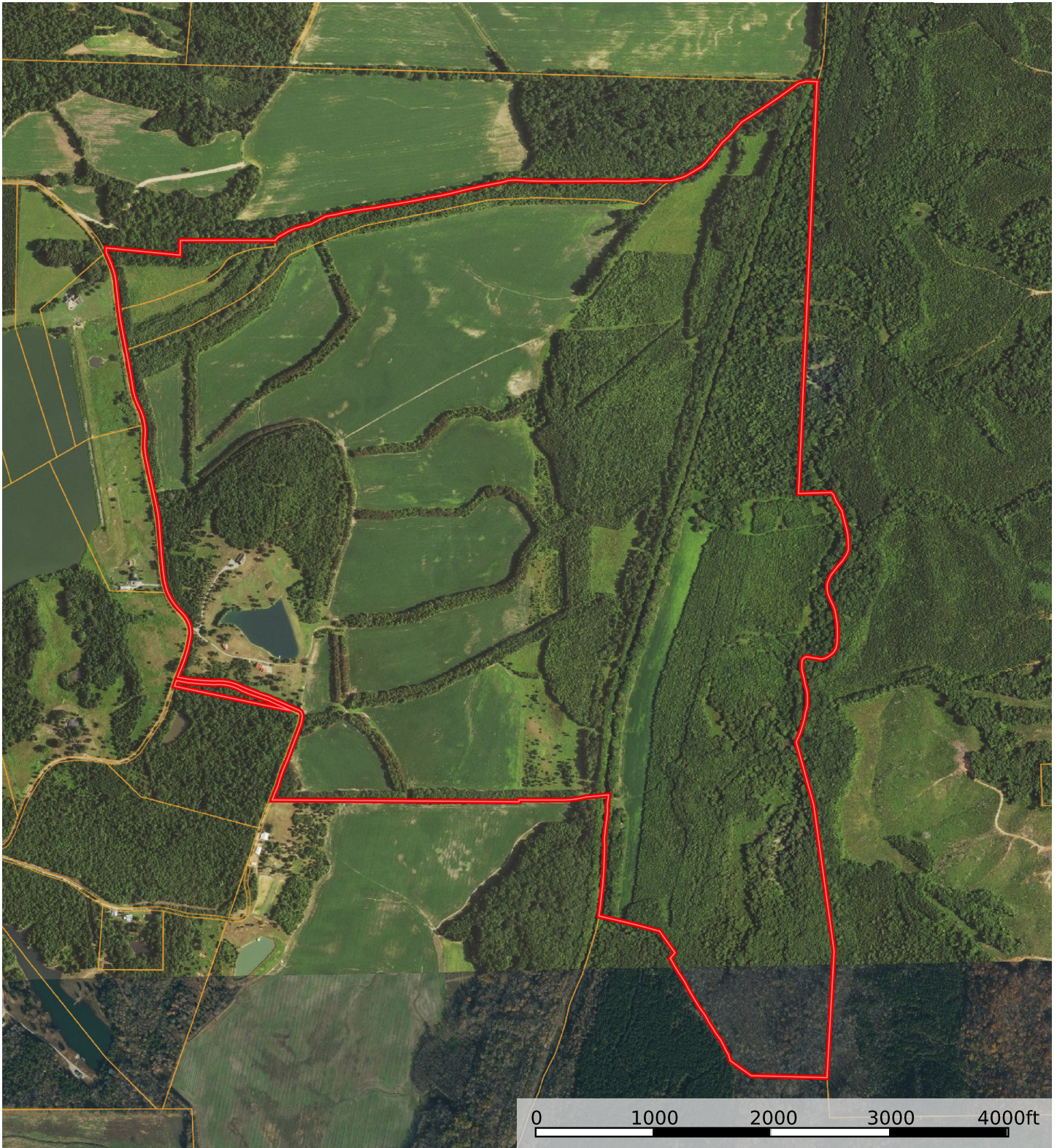


Bert Robinson IV | bertrobinson@garobinson.com

901.526.7631 | www.garobinson.com

91 South Front Street • Suite 02 • Memphis, Tennessee 38103





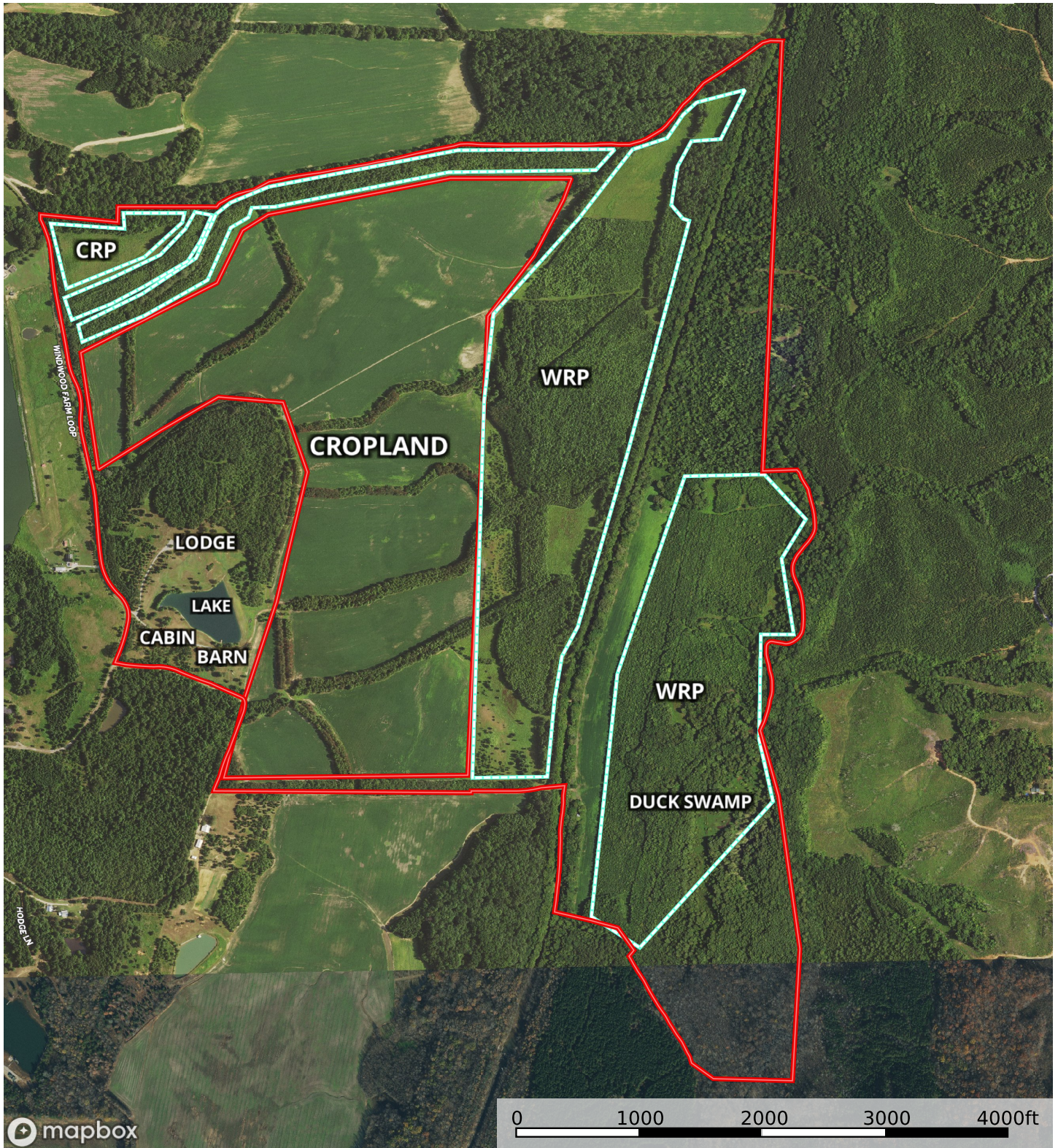
Bert Robinson IV | bertrobinson@garobinson.com

901.526.7631 | www.garobinson.com

91 South Front Street • Suite 02 • Memphis, Tennessee 38103



Muddy Creek
Tennessee, AC +/-



Bert Robinson IV | bertrobinson@garobinson.com

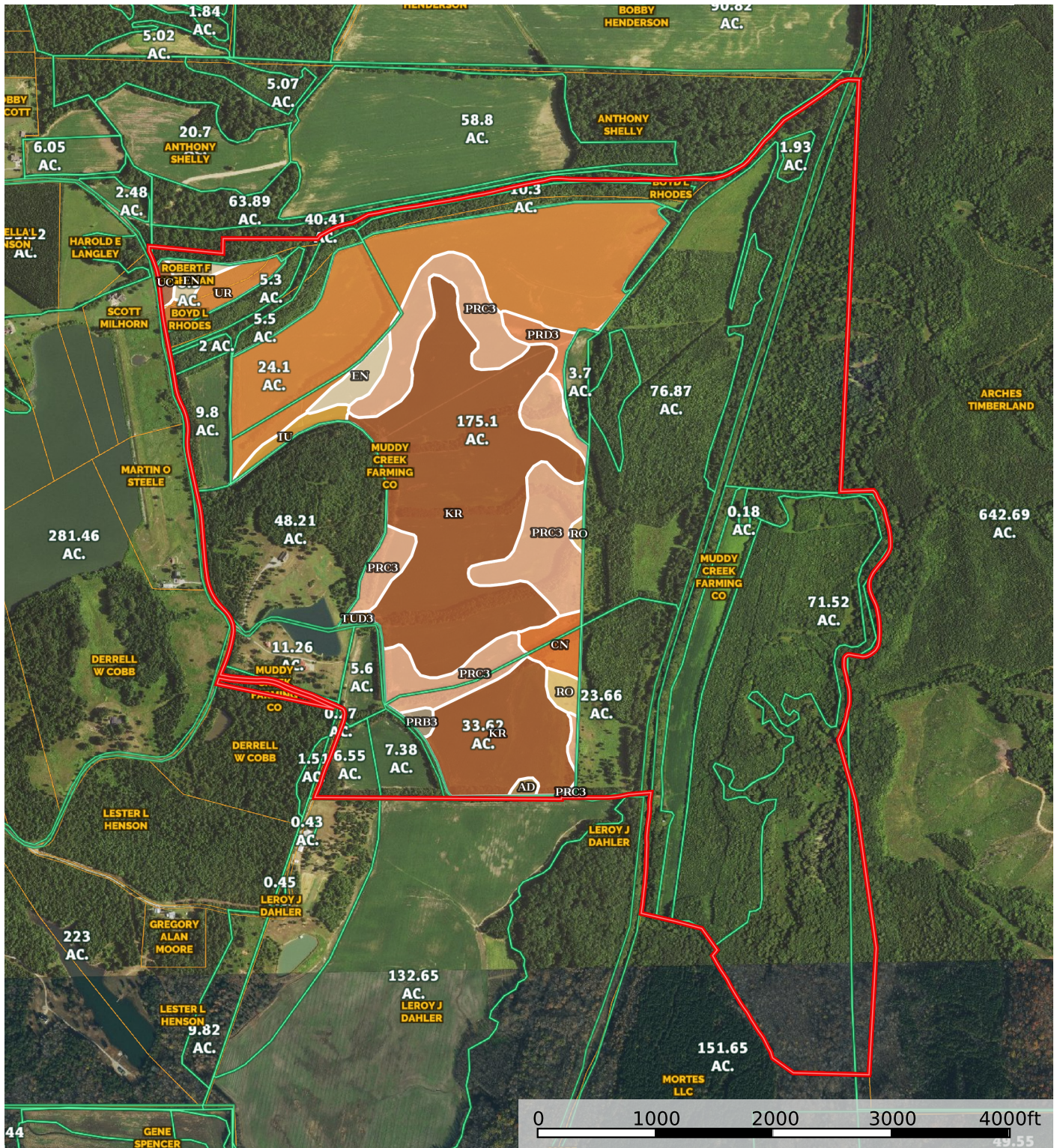
901.526.7631 | www.garobinson.com

91 South Front Street • Suite 02 • Memphis, Tennessee 38103



Muddy Creek

Tennessee, AC +/-



Bert Robinson IV | bertrobinson@garobinson.com

901.526.7631 | www.garobinson.com

91 South Front Street • Suite 02 • Memphis, Tennessee 38103



SOILS REPORT LEGEND

I 241.77 ac

SOIL CODE	SOIL DESCRIPTION	ACRES	%	NCCPI	CAP
Kr	Kurk silt loam	99.2	41.03	83	2w
Ur	Urbo silty clay loam, 0 to 2 percent slopes, occasionally flooded	72.65	30.05	50	2w
PrC3	Providence silty clay loam, 5 to 8 percent slopes, severely eroded	47.72	19.74	37	4e
En	Enville silt loam, 0 to 2 percent slopes, occasionally flooded	5.84	2.42	66	2w
Cn	Chenneby silt loam, 0 to 2 percent slopes, occasionally flooded	4.66	1.93	79	2w
PrD3	Providence silty clay loam, 8 to 12 percent slopes, severely eroded	3.18	1.32	34	6e
Iu	Iuka silt loam, occasionally flooded	2.67	1.1	81	2w
RO	Rosebloom and Bibb soils, occasionally flooded	2.63	1.09	65	5w
UC	Urbo and Chenneby soils, frequently flooded	1.05	0.43	62	4w
PrB3	Providence silty clay loam, 2 to 5 percent slopes, severely eroded	0.97	0.4	37	3e
Ad	Adaton silt loam	0.65	0.27	57	3w
TuD3	Tippah-Luverne complex, 5 to 12 percent slopes, severely eroded	0.55	0.23	64	6e
TOTALS		241.77(*)	100%	62.27	2.5

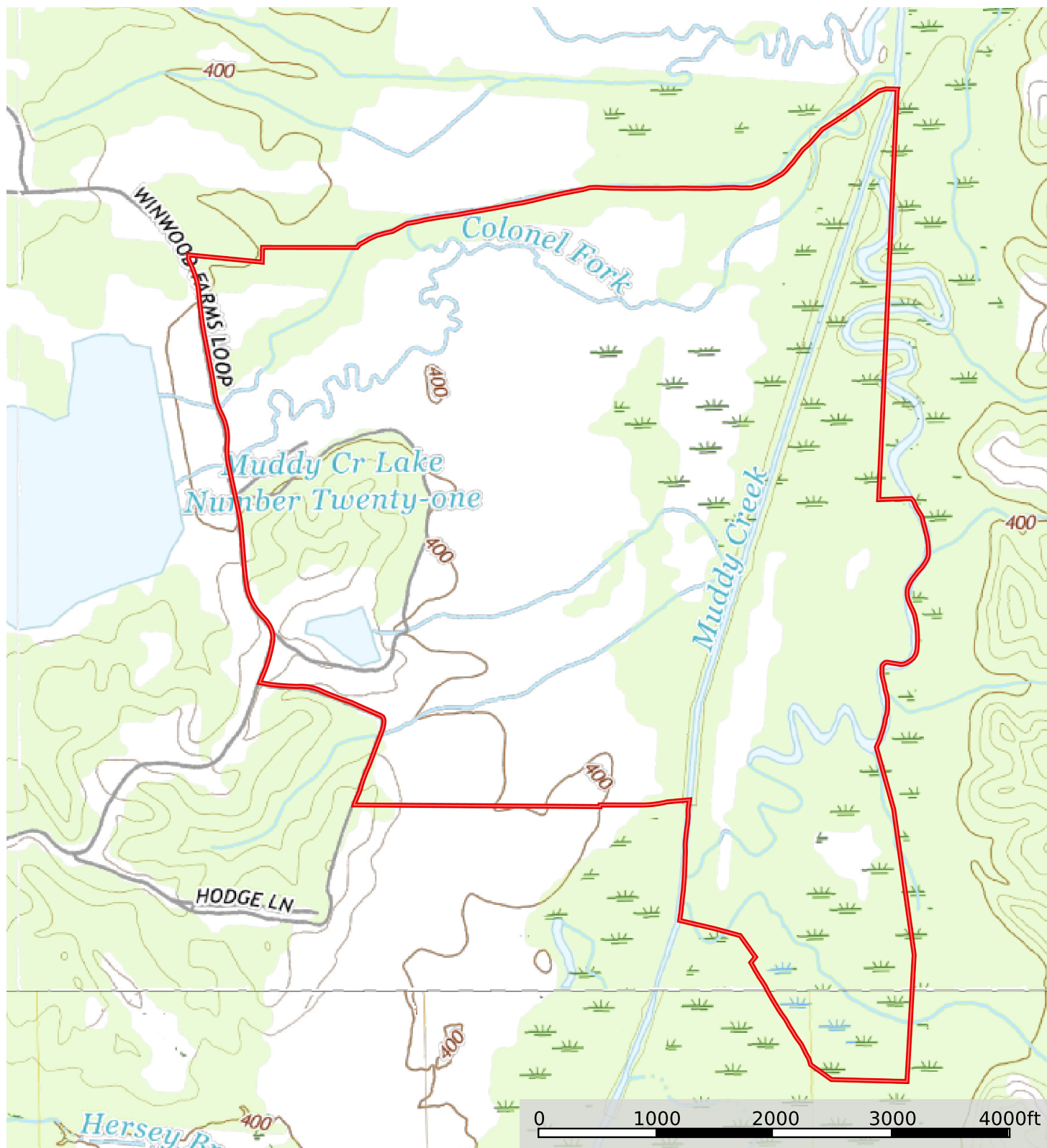
(*) Total acres may differ in the second decimal compared to the sum of each acreage soil. This is due to a round error because we only show the acres of each soil with two decimal.

Bert Robinson IV | bertrobinson@garobinson.com

901.526.7631 | www.garobinson.com

91 South Front Street • Suite 02 • Memphis, Tennessee 38103





Bert Robinson IV | bertrobinson@garobinson.com

901.526.7631 | www.garobinson.com

91 South Front Street • Suite 02 • Memphis, Tennessee 38103



G.A. ROBINSON
LAND COMPANY - EST. 1950